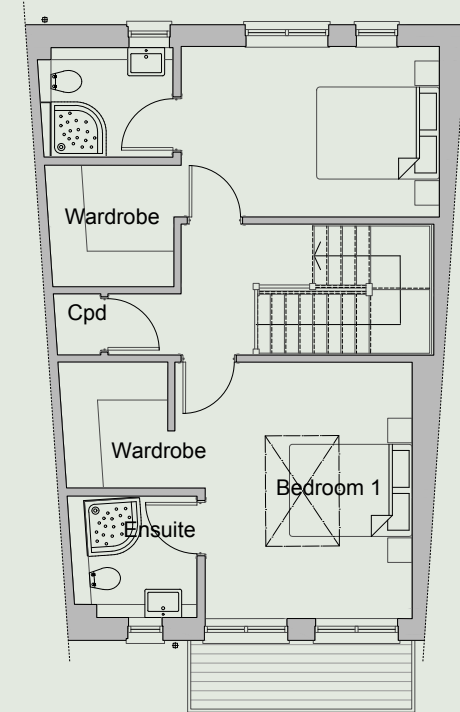
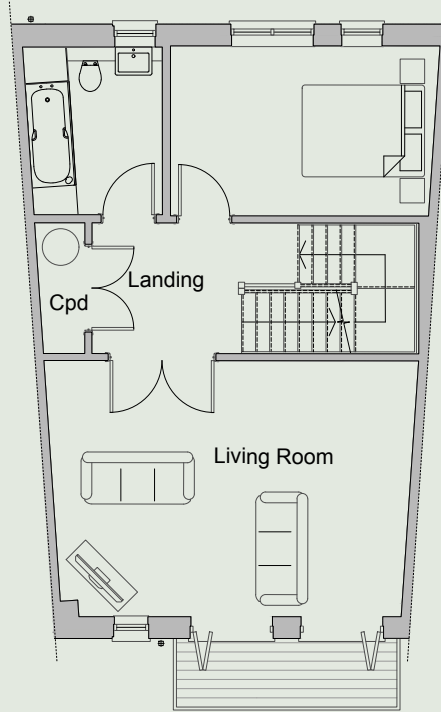
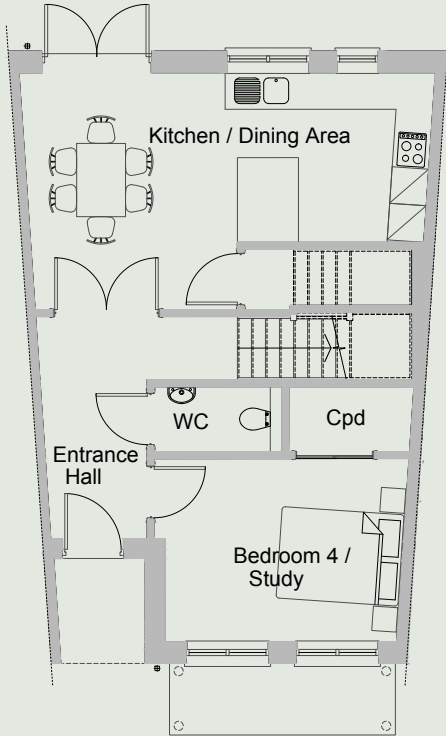


Plots 29-35

4 BED / 8 PERSON 171.5m²



Ground Floor

Kitchen / Dining	6.6m x 3.9m	21.7" x 12.8"
Entrance Hall	3.2m x 3.7m	10.5" x 12.1"
Bedroom 4 / Study	4.1m x 3.0m	13.5" x 9.8"

First Floor

Bedroom 3	4.2m x 2.8m	13.8" x 9.2"
Bathroom	2.2m x 2.7m	7.2" x 8.9"
Living Room	5.8m x 4.2m	19.0" x 18.8"

Second Floor

Bedroom 2	4.2m x 2.8	13.8" x 9.2"
Bedroom 1	3.8m x 4.2	12.5" x 13.8"